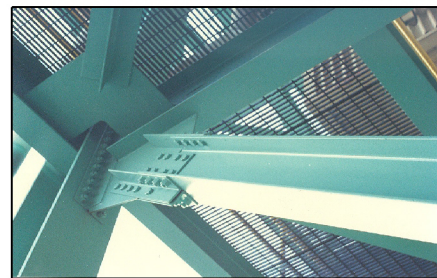
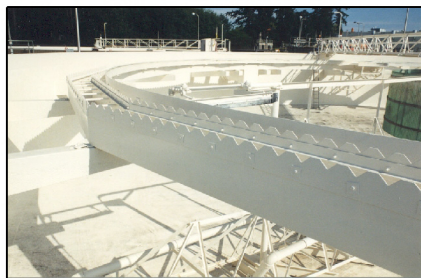


ROCK TRED

POLYMER COATING SOLUTIONS

Defining Excellence Since 1939



Rock-Tred Chem-Rock DTM High Solids Epoxy

Rock-Tred Chem-Rock DTM Glass Filled Epoxy is a two component, high solids, chemical resistant Amine Adduct Cured epoxy. Chem-Rock DTM is specially modified with a proprietary blend of selective resins, wetting agents, penetrants and rust inhibitors to provide excellent adhesion and protection of sound, rusty steel surfaces, and to upgrade old, deteriorated coatings. Ideal as a one coat system over marginal or poorly prepared surfaces where blasting is impractical or prohibited. Recommended as a high build primer under a wide variety of topcoats.

PRODUCT USES

Rock-Tred Chem-Rock DTM is formulated for use over tightly adherent rusty steel and previously painted surfaces limited to hand or power tool cleaning. Although blasting of steel is the best method of preparation, Rock-Tred Chem-Rock DTM will provide excellent adhesion and protection to non-blasted steel surfaces in any industrial facility. Specific areas include structural steel, tanks, vessels, water towers, equipment, pipe lines and racks, metal buildings, fences, catwalks, bridges, railings, fire escapes, in chemical processing plants, pulp and paper mills, sewage and waste water treatment facilities, fertilizer plants, petroleum refineries, electric generating stations, coal handling operations, and marine installations. Rock-Tred Chem-Rock DTM can also be used as an internal tank lining. (See Rock-Tred for specific applications)

ROCK  TRED
POLYMER COATING SOLUTIONS
Defining Excellence Since 1939

405 N. Oakwood, Waukegan, IL 60085
Phone: 1-847-673-8200 Fax: 1-847-679-6665